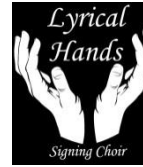




Grace Kelly

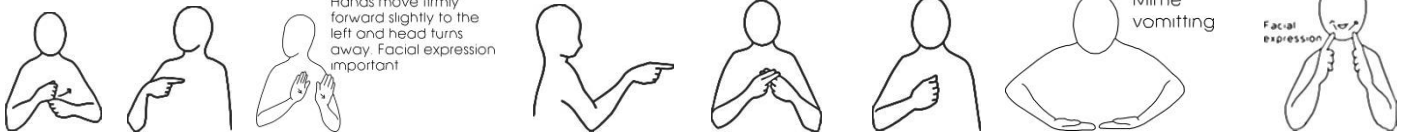


Spoken: "I wanna talk to you. The last time we talked, Mr. Smith you reduced me to tears. I promise you, it won't happen again"



Do I attract you?

Draw formation back twice, flexing index fingers



Do I repulse you with my queasy smile?

Hands move firmly forward slightly to the left and head turns away. Facial expression important

Mime vomiting

Facial expression

Right hand ends palm up directed at person



Am I too dirty? Am I too flirty?

Pat chest gently

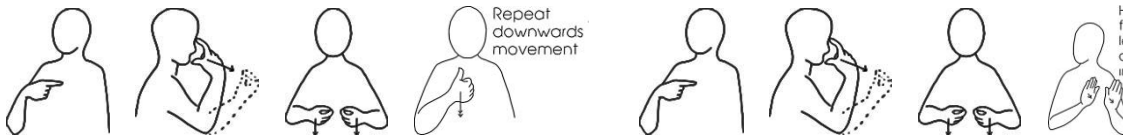
Pat chest gently



Do I like what you like?

Repeat downwards movement

Hands move firmly forward slightly to the left and head turns away. Facial expression important



I could be wholesome, I could be loathsome



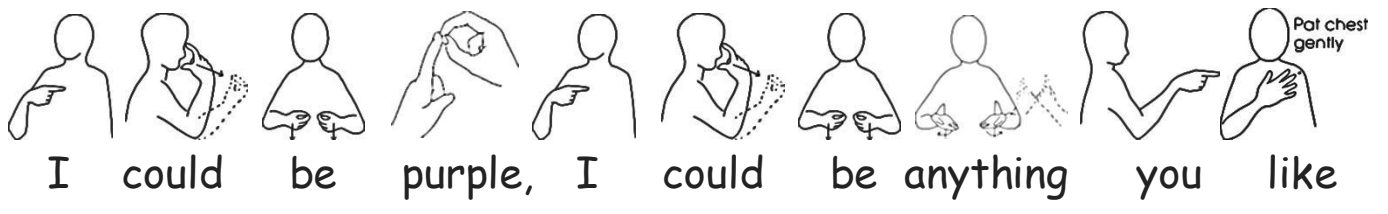
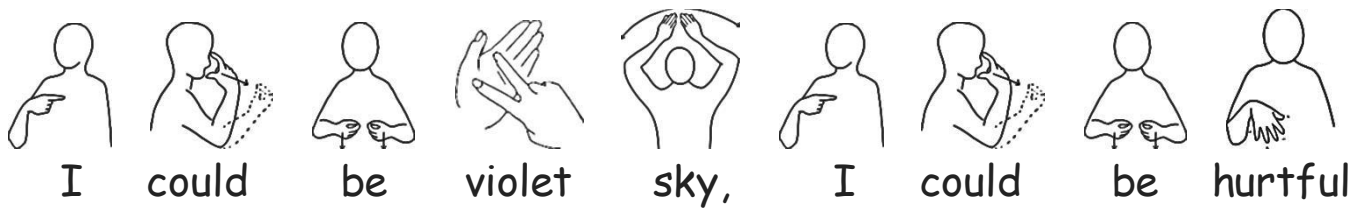
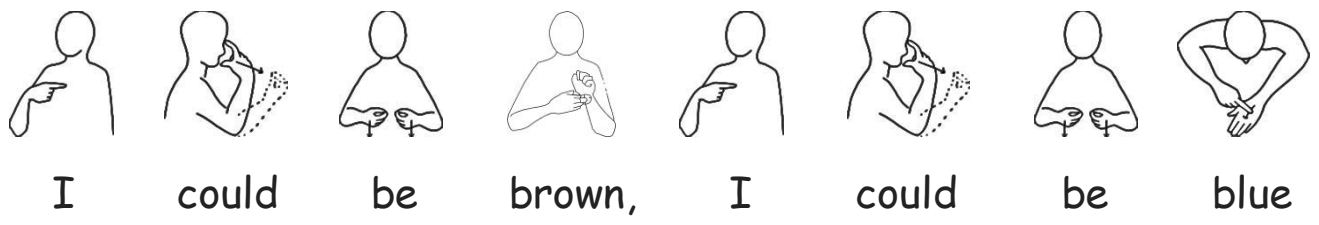
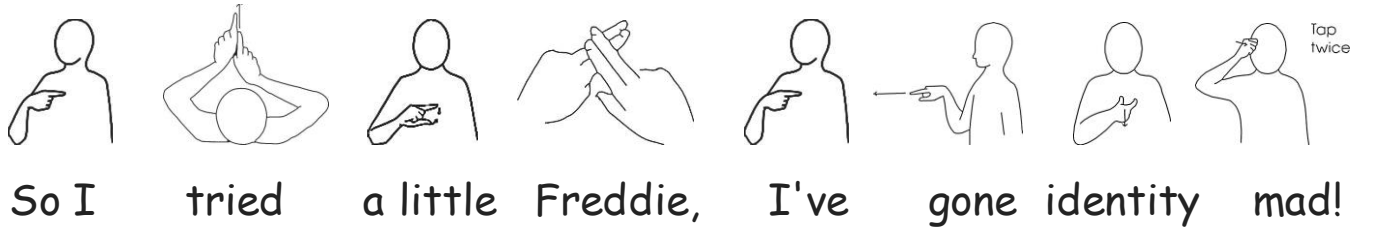
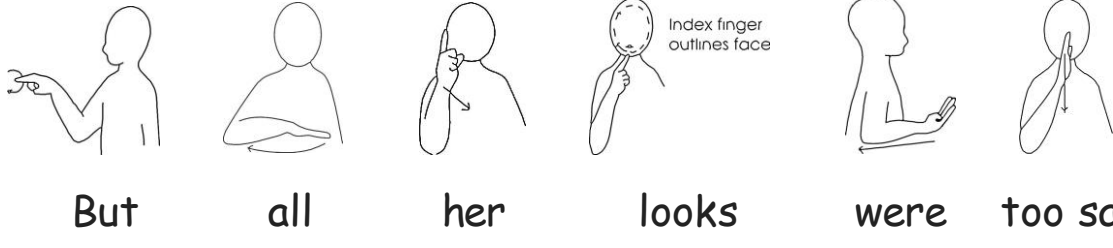
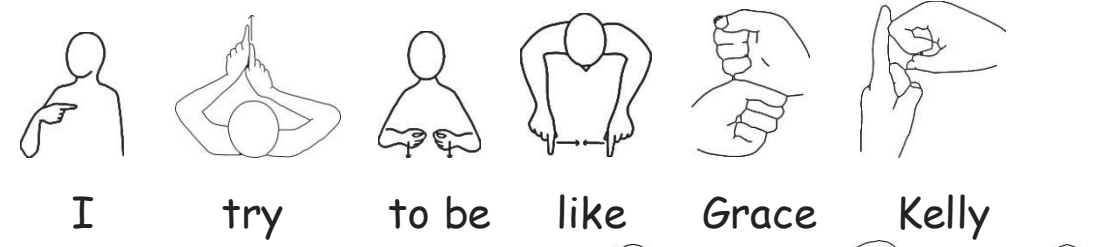
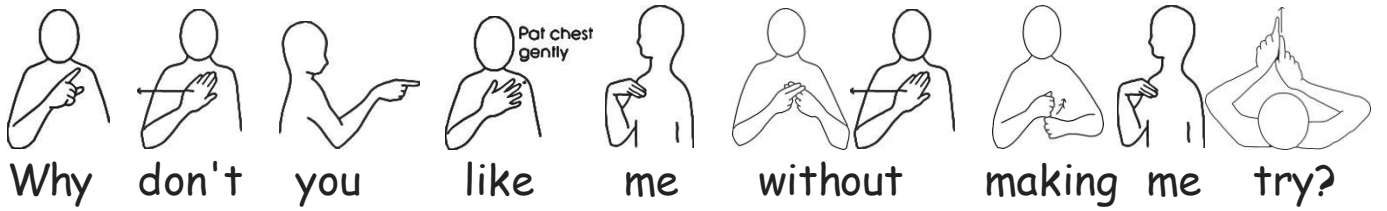
I guess I'm a little bit shy

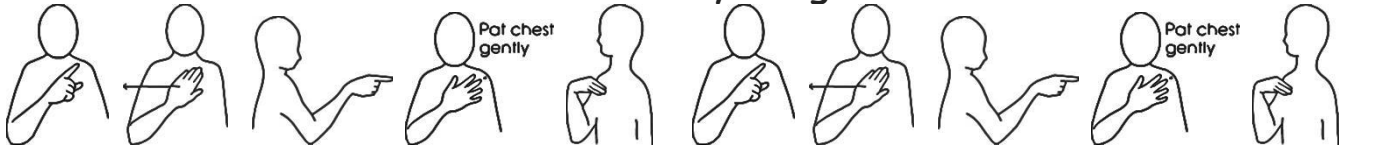
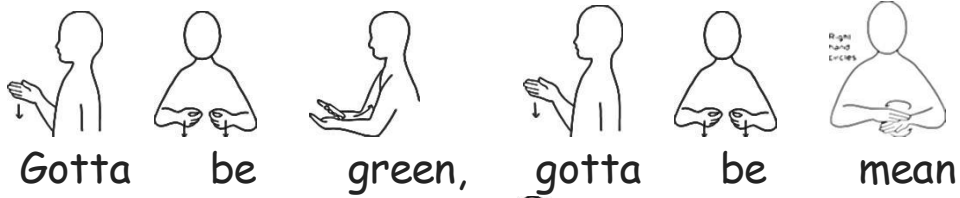
Right index finger on chin, twists slightly. Facial expression most important



Why don't you like me?

Pat chest gently

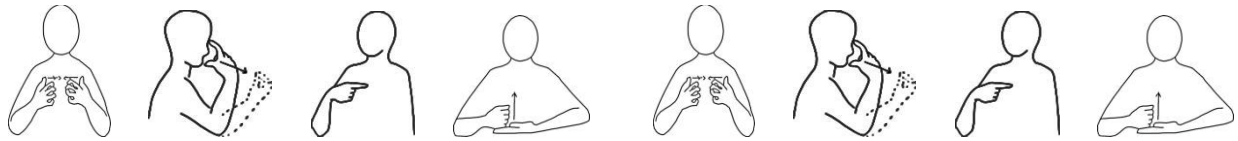




Why don't you like me?



Why don't you walk out the door!



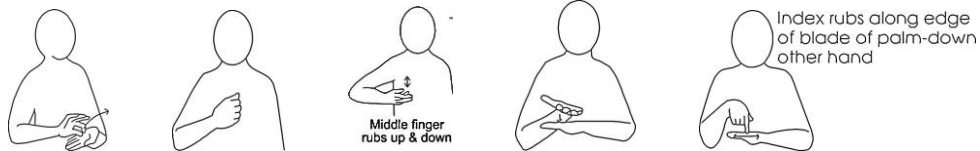
How can I help it?



How can I help what you think?



Hello, my baby, Hello, my baby



Putting my life on the brink

Why don't you like me? Why don't you like me?

Why don't you like yourself?

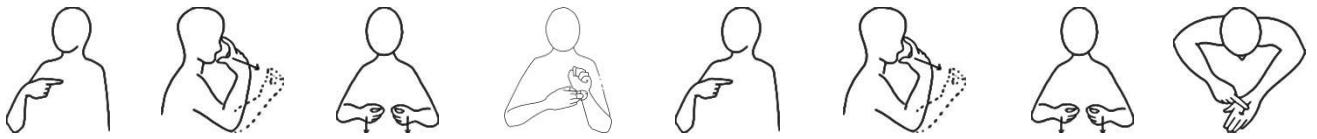
Should I bend over? Should I look older

Just to be put on your shelf?

I try to be like Grace Kelly

But all her looks were too sad

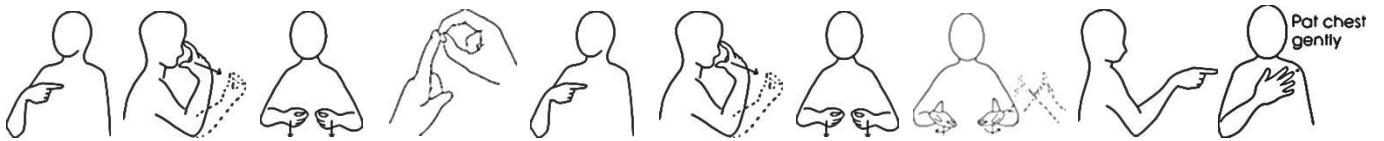
So I tried a little Freddie, I've gone identity mad!



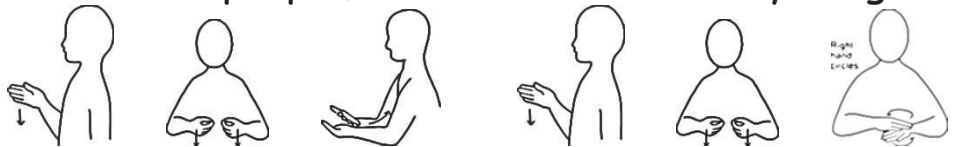
I could be brown, I could be blue



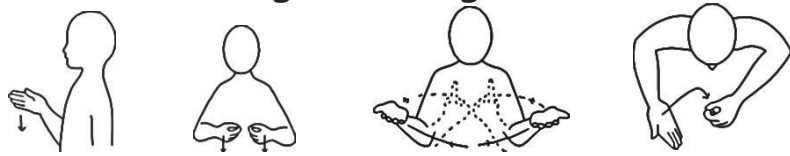
I could be violet sky, I could be hurtful



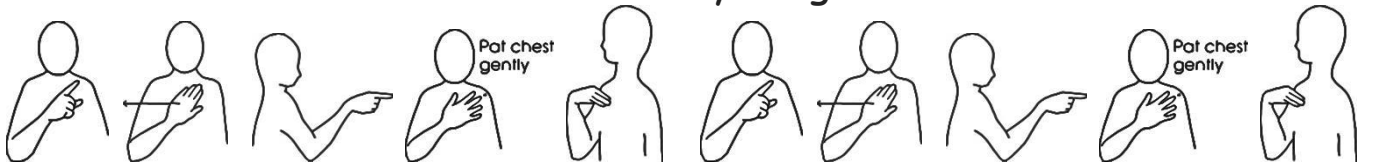
I could be purple, I could be anything you like



Gotta be green, gotta be mean



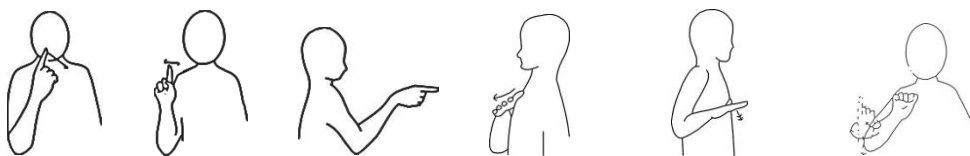
Gotta be everything more



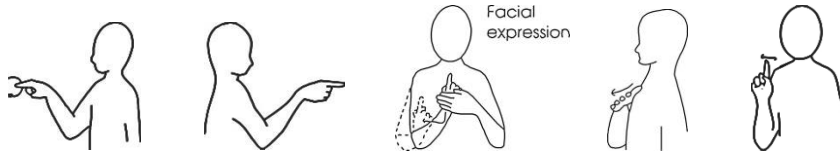
Why don't you like me? Why don't you like me?



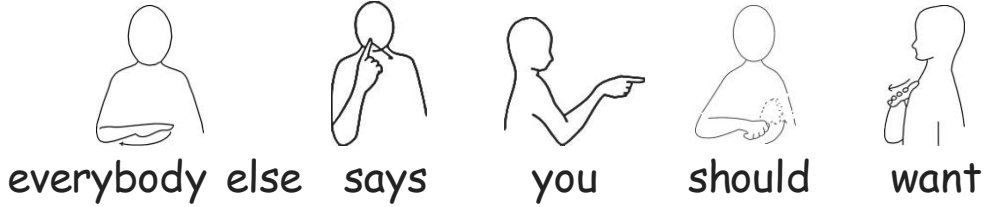
Why don't you walk out the door!



Say what you want to satisfy yourself



But you only want what



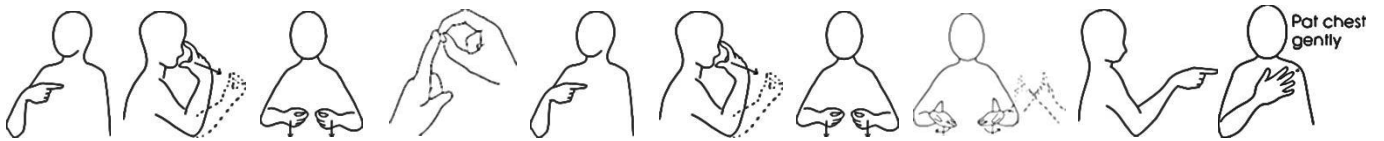
everybody else says you should want



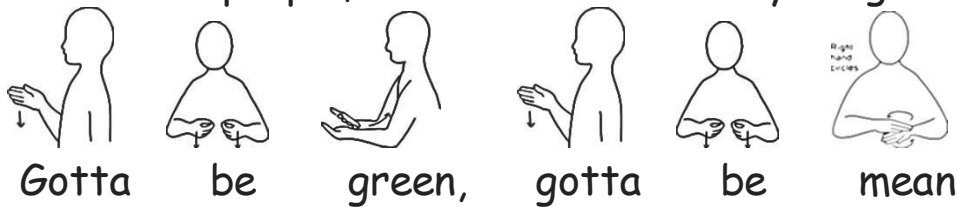
I could be brown, I could be blue



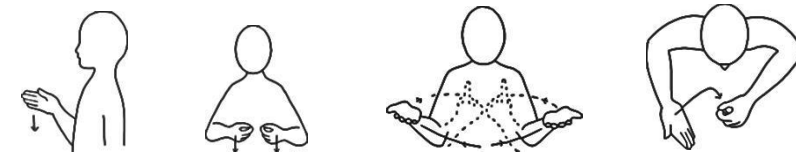
I could be violet sky, I could be hurtful



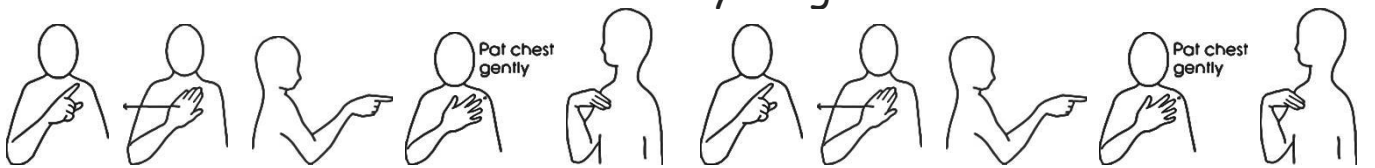
I could be purple, I could be anything you like



Gotta be green, gotta be mean



Gotta be everything more



Why don't you like me? Why don't you like me?



Why don't you walk out the door!



I could be brown, I could be blue



I could be violet sky, I could be hurtful



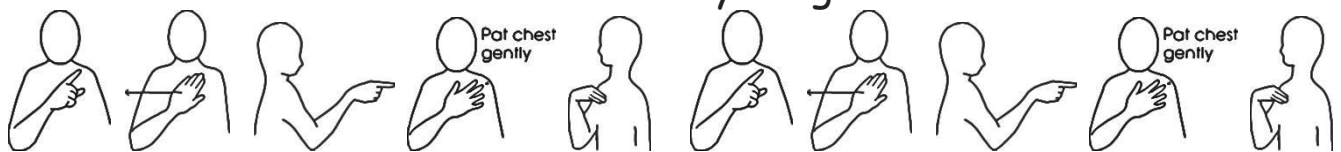
I could be purple, I could be anything you like



Gotta be green, gotta be mean



Gotta be everything more



Why don't you like me? Why don't you like me?



Why don't you walk out the door!

Spoken: "Humphrey, we're leaving" (Sound effect - Ka-ching)

Grace Kelly by Mica

Translated for the Lyrical Hands Signing Choir by Sarah Wheeler (May 2019)